

West Seattle and Ballard Link Extensions

*Bicycle Advisory Board
3/4/2020*



System expansion

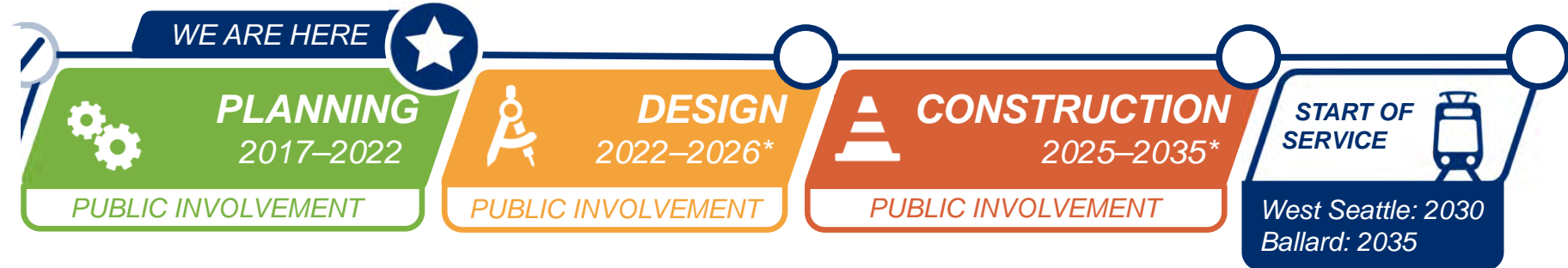
Sound Transit's system expansion means every few years new light rail, bus rapid transit and commuter rail stations open throughout the region, providing fast, reliable alternatives to congested roads

 [soundtransit.org/system](https://www.soundtransit.org/system)



West Seattle and Ballard Link Extensions

Project timeline





PLANNING

2017–2019

Alternatives development

Feb–March 2018:
Early scoping

Feb–April 2019:
Scoping

May–Oct 2019: Board identifies preferred alternatives and other DEIS alternatives



2019–2022

Environmental review

Early 2021: Publish Draft EIS

Board confirms or modifies preferred alternatives

2022: Publish Final EIS

Board selects projects to be built

Federal Record of Decision

PUBLIC INVOLVEMENT

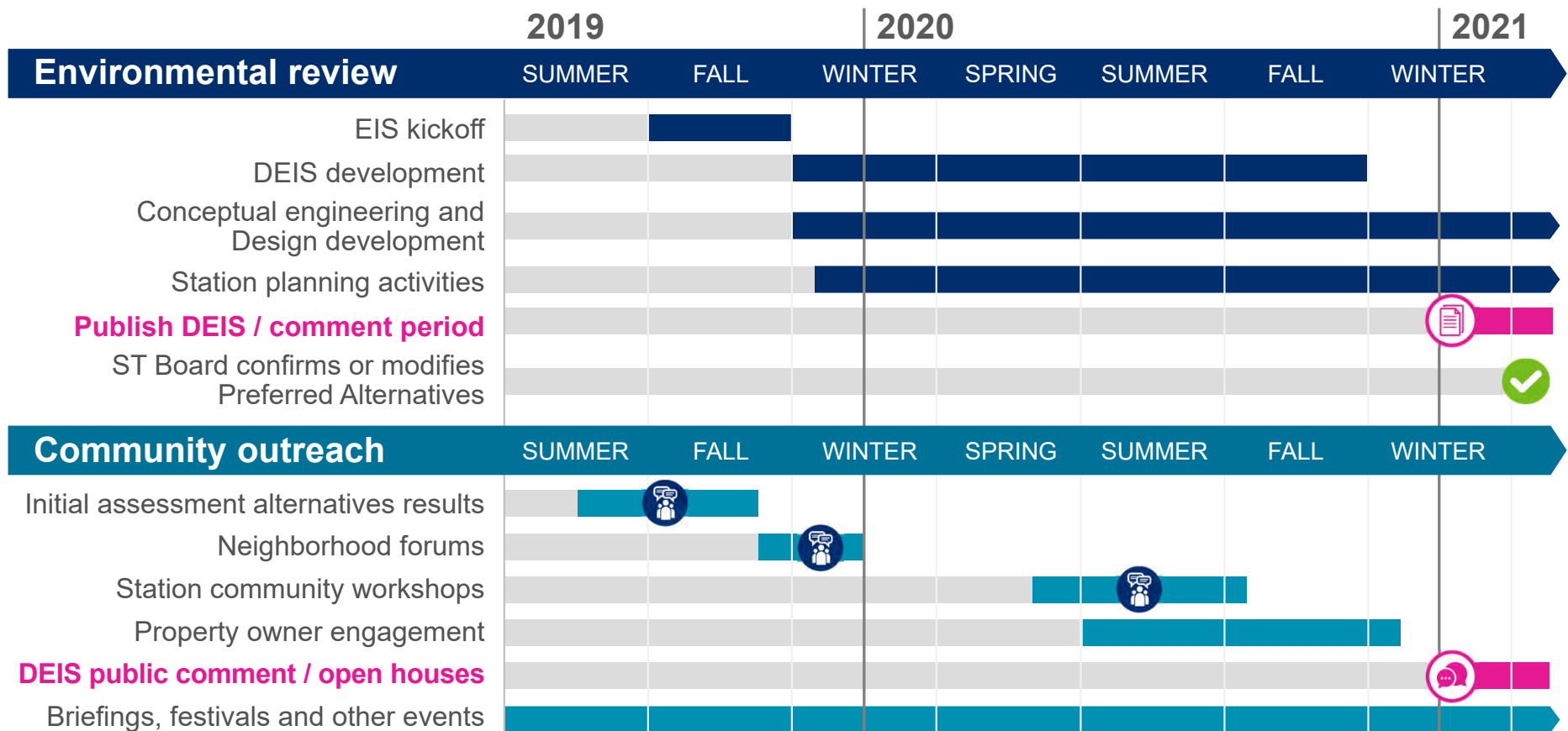
West Seattle and Ballard Link Extensions

What we're studying in this phase

- Preferred Alternatives
- Preferred Alternatives with Third-Party Funding
- Other Draft EIS alternatives



Community outreach and collaboration



 *wsblink@soundtransit.org*
(206) 903-7229



soundtransit.org/wsblink



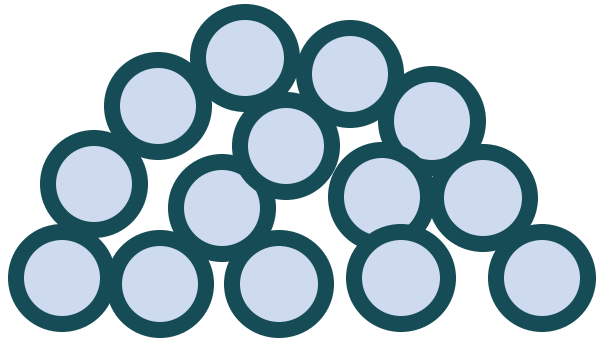
Creating Connected Communities

Sound Transit Light Rail expansion in Seattle

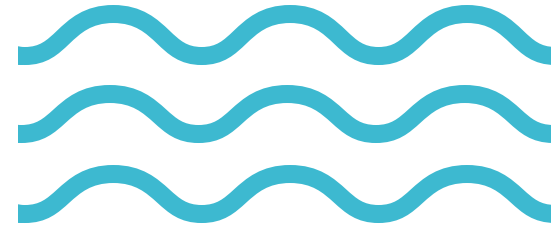
Let's Talk About



- Sound Transit's light rail expansion in Seattle and the role each of us are playing
- The draft vision & guiding principles for the City's work
- Your current hopes and concerns about the light rail project and how to maximize the benefits in your neighborhood
- The upcoming conversation about planning investments in the station area and your neighborhood

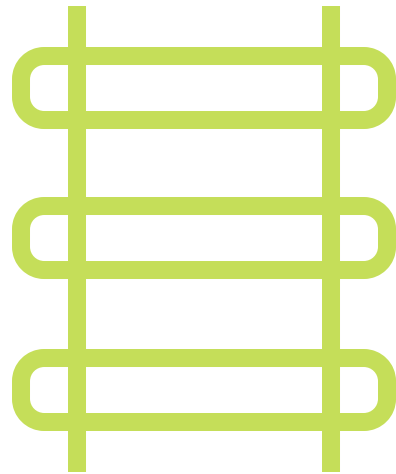


14
new
stations



2
water
crossings

~12
miles of new track



a new tunnel
through
downtown



Roles



- Evaluate potential alignment and station locations.
- Conduct planning, environmental review, and design of the light rail system.
- Build and operate new light rail system.

Center racial equity for better outcomes
+
Co-planning stations with communities



Seattle

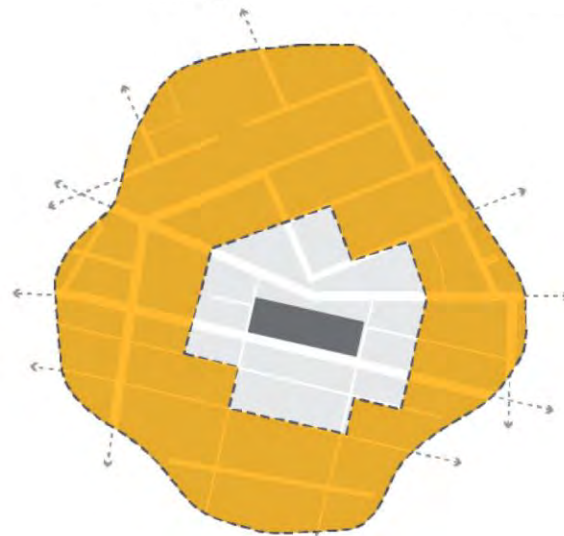
- Mayor Jenny Durkan & Councilmember Debora Juarez sit on the Sound Transit Board that will make final decisions.
- Plan housing, businesses, and open spaces to make great neighborhoods around new stations.
- Issue permits to Sound Transit to build stations and track.



Station



Station Context



Station Area

Your Impact

- Help inform Seattle decision makers over the next 2-3 years about station and track locations.
- Your input will help shape the changes in how your neighborhood looks and functions
- We will be having many conversations about how to set priorities for city investments and actions in station areas.



Current City Work to Support ST3

- Establishing strong relationships with Sound Transit to identify issues early and craft solutions
- Creating teams for permitting, planning, and public engagement
- Working to support delivering light rail faster and within budget
- Collaborating with Sound Transit on a Racial Equity Toolkit to center issues of race





Our Vision

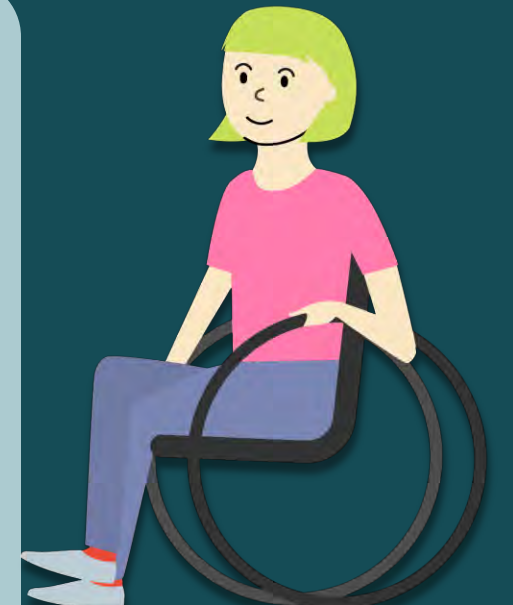
A thriving, equitable city connected by a world class transportation system.

Dependable Transit

Support efficient and reliable light rail service to your neighborhood that gets you where you need to go.

OBJECTIVES:

- Connects you to work, school, shopping, and recreation in other neighborhoods
- Integrates with robust transit service in your neighborhood
- Reduce number of cars on the road, improving travel times for all
- Allows efficient movement of freight
- Supports a safer transportation network and fewer collisions



Vibrant Communities

Create opportunities for affordable housing and businesses located near stations that support your diverse community with more places for you to live, work, and shop.

OBJECTIVES:

- Draws people to the neighborhood and enhances community
- Supports more affordable homes and retail spaces
- Adds shared public areas like plazas and improves access to parks
- Improves public safety through active streetscapes
- Supports public art and the neighborhood culture

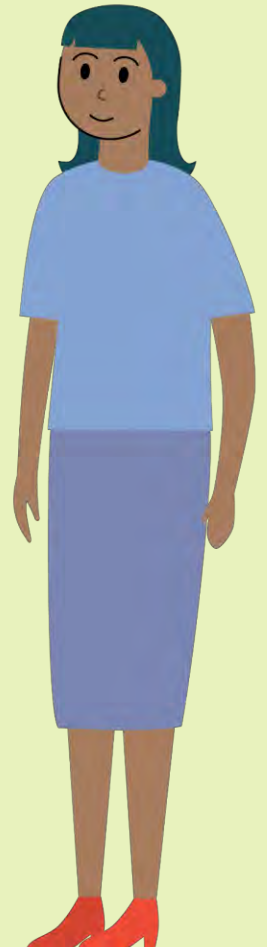


Climate Action

Reduce our dependence on cars and give communities real, clean energy alternatives for transportation that reduces our impact on the changing climate.

OBJECTIVES:

- Reduces vehicle emissions, improves local air quality, and supports our climate action goals
- Incentivizes walking, biking, and bus riding through locating stations and city investments
- Limits parking near stations to encourage other options



Equity

Race and social justice is the foundation for City decision-making on light rail expansion.

What is racial equity?

When social, economic and political opportunities are not determined by a person's race.

OBJECTIVES:

- Provides welcoming and comfortable light rail options for all, regardless of race
- Reduces short- and long-term negative impacts that disproportionately burden communities of color
- Provides access to transit regardless of language proficiency, physical ability, age, income, or other status



Things to think about. We'll circle back.

What feedback do you have on the City's guiding principles?

How can we make the station a positive change in your neighborhood?

What access improvements and other investments are needed in the station area?



What's Next?

The City wants to stay in touch with you on this and other topics.

This is the start. We will be back with more information and opportunities for further dialog.

 Sign up to receive our email updates:
seattle.gov/lightrail

 Sound Transit project updates:
soundtransit.org/wsblink

Thank you

Your name here

 206.555.5555  email@seattle.gov

Sound Transit: [soundtransit.org/wsblink](https://www.soundtransit.org/wsblink)

City of Seattle: [seattle.gov/lightrail](https://www.seattle.gov/lightrail)